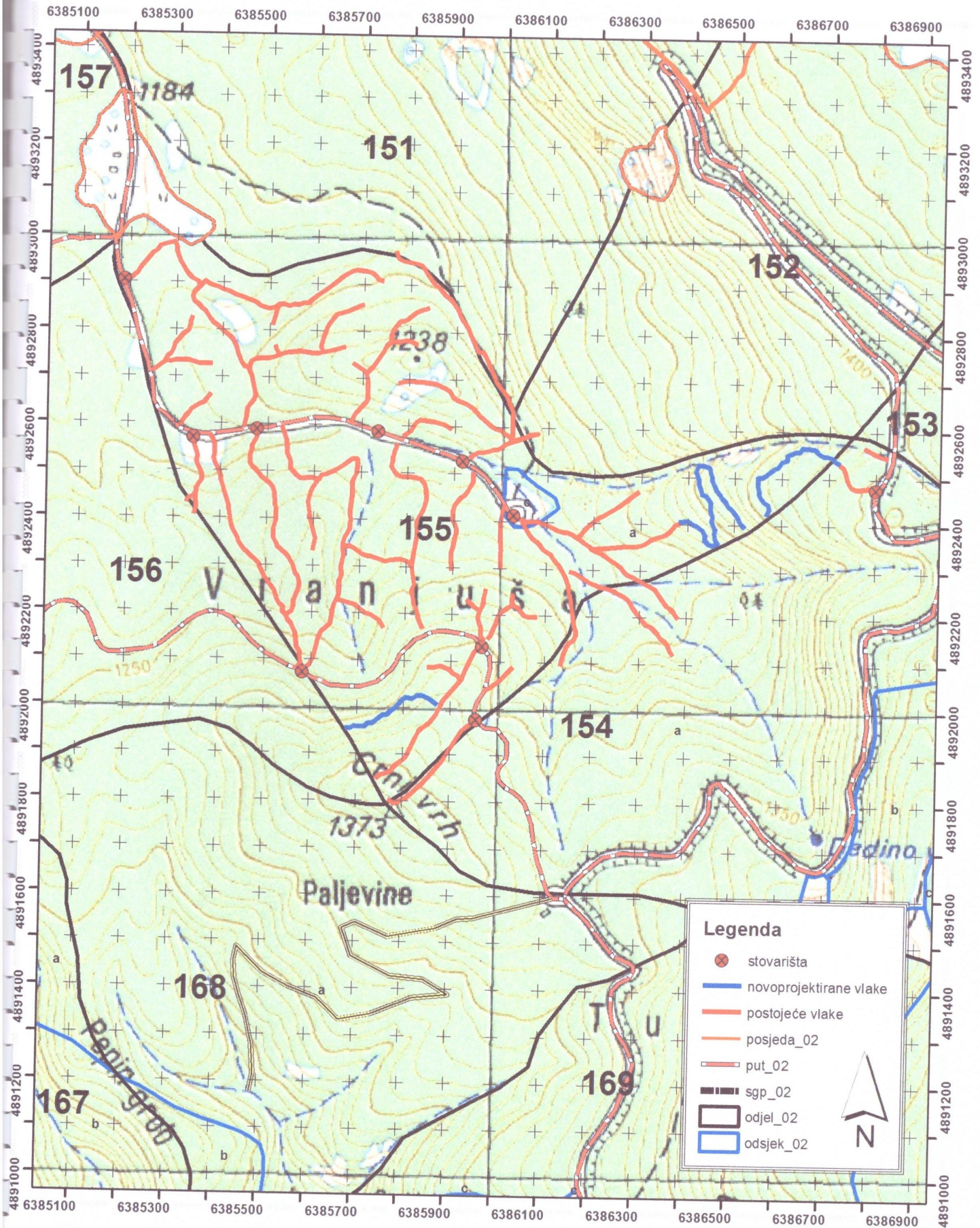







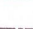
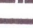

OPĆI PODATCI O ODJELU

Šumarija	Bosansko Grahovo		
Gospodarska jedinica	Jadovnik Grahovo		
Odjel	155		
Površina (ha)	80,6		
Neto drvena masa (m³)	Četinjače	Listače	Σ
	3.049,42	1.770,46	4.819,89
Srednja zapremina doznačenih stabala (m³)	1,08		
Srednji promjer doznačenih stabala	30,17		
Ukupna drvena zapremina doznačenih stabala (m³)	5.933,13		
Ukupan broj doznačenih stabala (komada)	5.477		
Prosječni broj doznačenih stabala (kom/ha)	68,0		
Prosječna doznačena zapremina doznačenih stabala (m³/ha)	73,61		
Uvjeti rada	Povoljan		
Dvotjedna dinamika	695 m ³		
Potreban broj radnih dana	83		
Vrijednost poslova (KM)	98.808		
Udaljenost od šumarije (km) cca.	24		
Napomena :	Početak obračuna radnih dana je 03.01.2019.		

Šumarija Bosansko Grahovo, G.J. Jadovnik Grahovo, Odjel 155 M 1 : 10 000



Legenda

-  stovarišta
-  novoprojektirane vlake
-  postojeće vlake
-  posjeda_02
-  put_02
-  sgp_02
-  odjel_02
-  odsjek_02

